

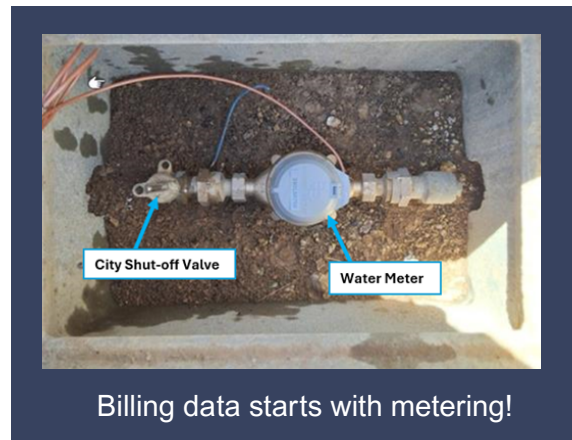


What is the Water Resource Management Model (WRMM)?

In the early 2010s, Water Resource Management staff recognized the need for the City to have all its water planning data in one location. Not only did this data need to be housed in a spreadsheet or similar, but maps needed to be produced using Geographic Information Systems (GIS). Work commenced in earnest in 2015. By 2017, the WRMM was operational and providing results about how water was used by both potable and non-potable water accounts. The WRMM is used for water planning by testing possible future water needs or changes within the City's service area.

What kind of data is in the WRMM?

The key data set in the WRMM is water billing data. In the City's water service area customers are provided water through a meter. Data from the water meters inform the WRMM how much water is being used and where it should be assigned. Yavapai County GIS data is imported to show where new subdivisions have been platted or how non-subdivided lands have changed. Water supply data is based on the three types of water available to the City, see page 4.



Billing Data

Subdivision Info

Water Supply Data

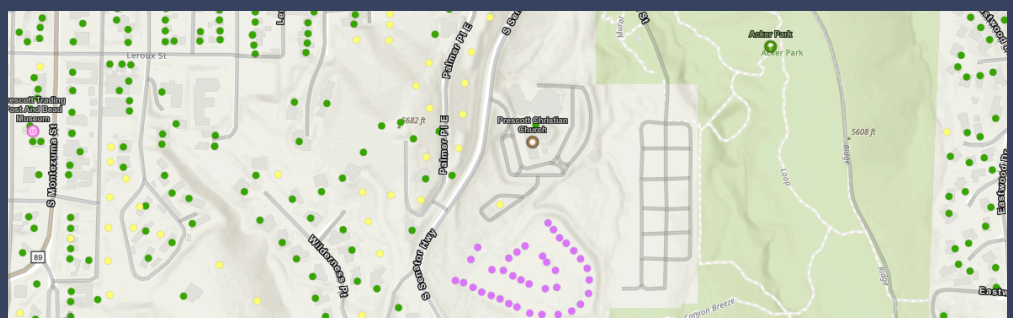
How is the WRMM maintained?

The WRMM is maintained by the City's GIS Department. Each January the WRMM is updated with the previous year's billing data. Water use is estimated based on other customers in their category (Single Family, Multi-Family, or Non-Residential) until there are 5 years of metered water use data. If the new customer was anticipated (yellow or purple dot) due to a contract obligation or similar, then the WRMM dot is changed to green.

This is a clip from the WRMM map.

Green = existing customer

Yellow and Purple = are anticipated customers

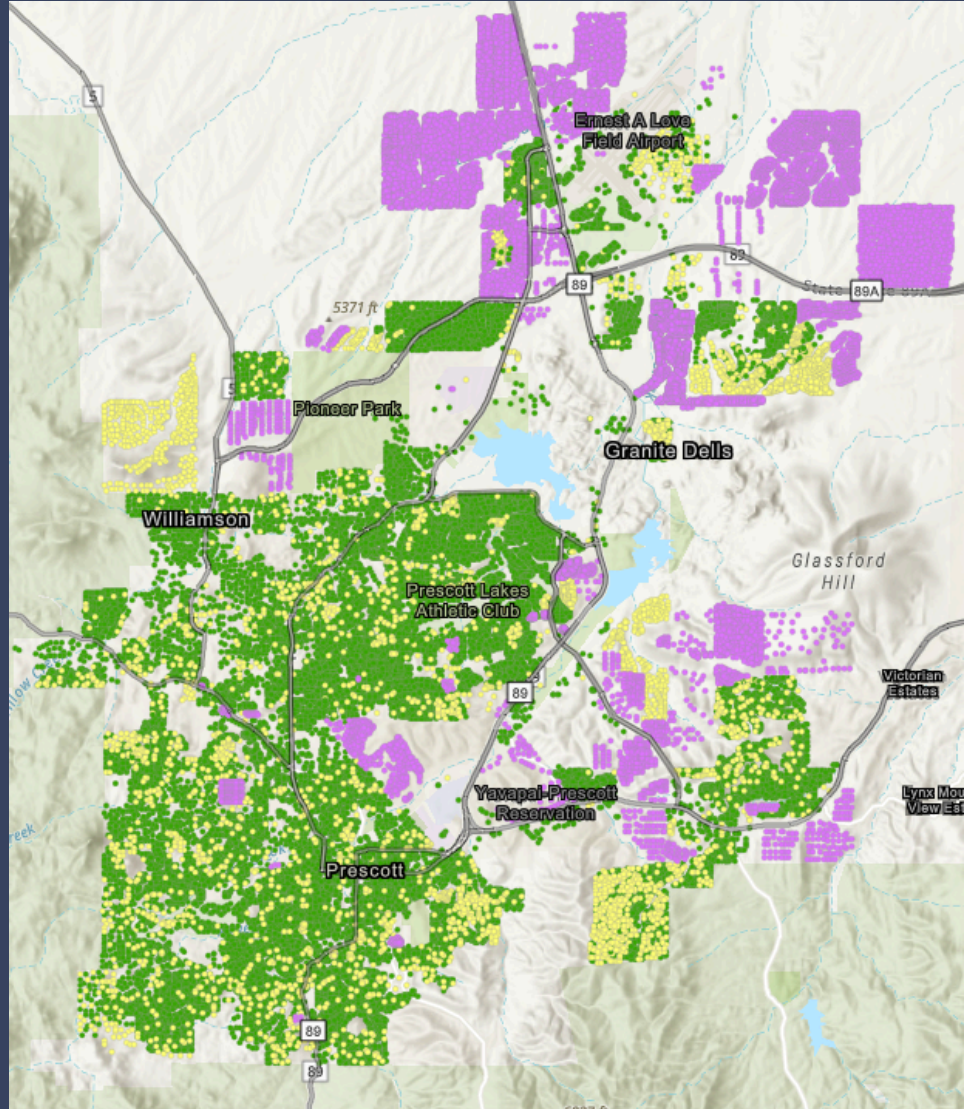


A walk around the WRMM - water service in or near City Limits

The City’s water service area includes City limits and some areas adjacent to or near City limits. In the map below, green dots show current city water customers. Yellow and purple dots are lands the City is obligated to serve in accordance with existing contracts.

The City has water contracts dating back to the 1940s. During this time from 1940 to 2024 (84 years), the city has entered into a variety of agreements that provide water service, sometimes with or without a stated volume.

The City also serves or makes available non-potable (reclaimed) supplies. The contracted users include 3 golf courses, 1 sand & gravel business, and 1 construction company.



Water Service in or near the City Limits

POTABLE		
Year 2024	No. of Billing Accounts	Use in AF/yr
Existing Customers in City Limits	22,332	5,789
Existing Customers in Yavapai County	2,399	551
Existing YPIT Reservation Customers	79	105
Total	24,810	6,445

NON-POTABLE		
Year 2024	No. of Users	Use in AF/yr
Existing Customers in City Limits	4	1,572

These numbers remain under review to improve all data sets.

City Water Supply Data in the WRMM

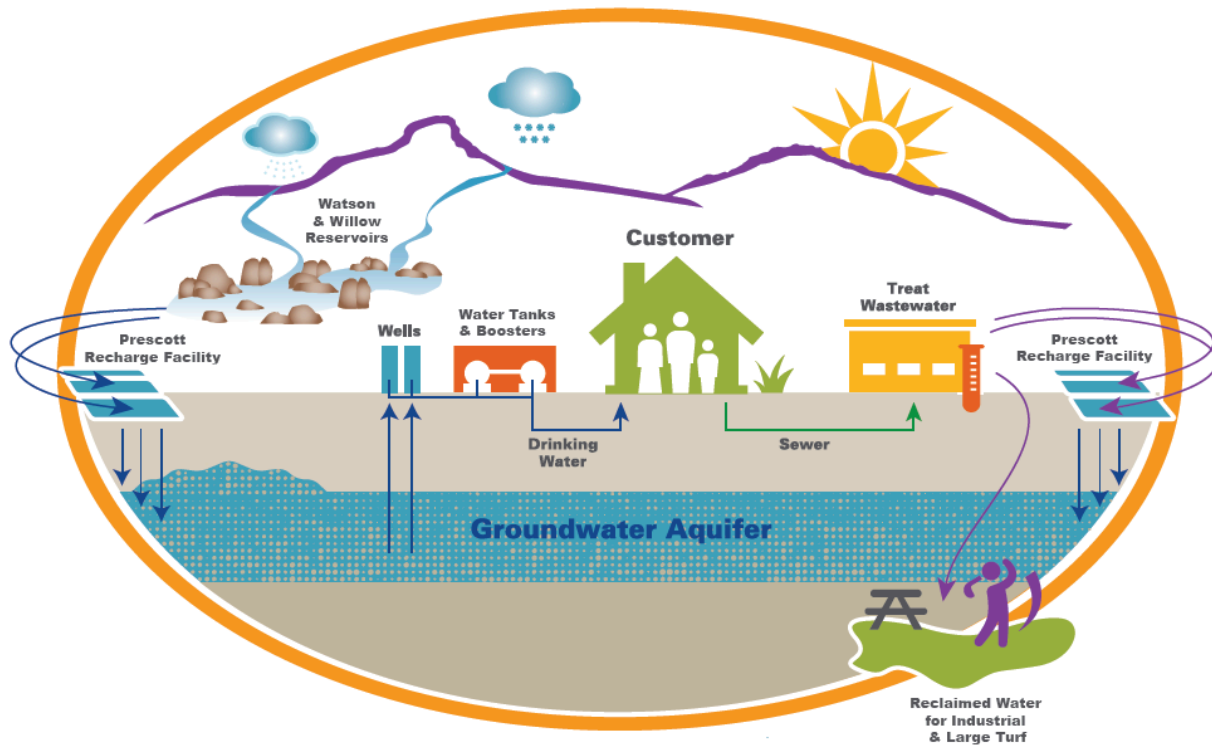
Three water supply types are tracked in the WRMM. Each one is described below.

Groundwater	Reclaimed Water	Surface Water
City potable water customers are provided groundwater pumped from 8 wells. In the WRMM this supply is the largest available volume to meet demands. However, from a regulatory standpoint it can be offset with the other two supply types.	City non-potable water system supplies are generated by the return flows from the potable system. Reclaimed water has two uses, direct deliver (e.g. golf courses) and recharge near the airport. This supply, all or a portion, can be recovered annually.	City surface water supplies are not part of the potable or non-potable system. The water is released from Watson and Willow Lakes and recharged near the airport. This supply must be fully recovered each year in accordance with State of Arizona statutes.

For more details on the water supplies tracked in the WRMM see *2024 Baseline - Supplies information sheet.*

City of Prescott Water Cycle

Follow the diagram below to understand how water supplies are used and moved throughout the City's water service area to meet customer demands.



For Additional Information:

City of Prescott webpage: prescott-az.gov
Participate Prescott: participateprescott.com